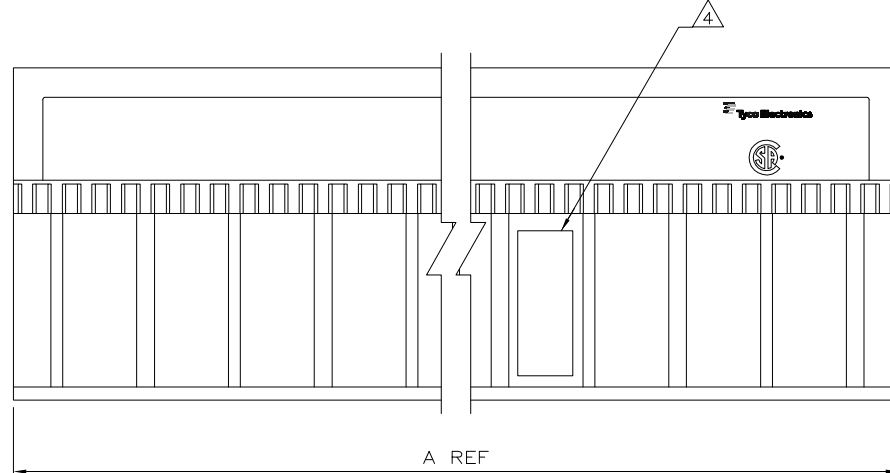
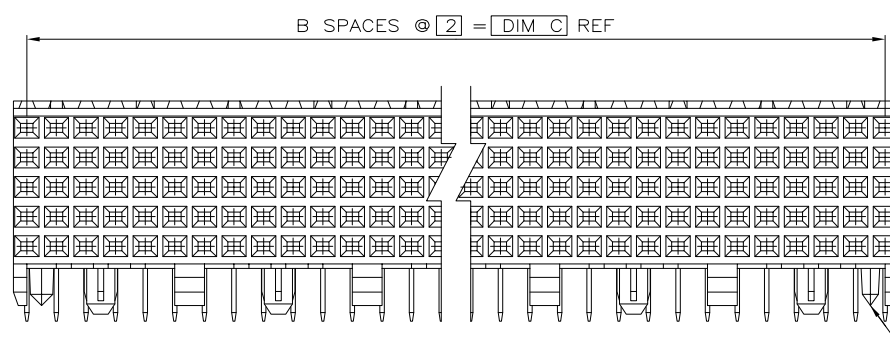


THIS DRAWING IS UNPUBLISHED. RELEASED FOR PUBLICATION. ALL RIGHTS RESERVED.

LOC	DIST	REVISIONS			
#	LTR	DESCRIPTION	DATE	DN	APPD
AD	00				
C		REVISED PER ECR-15-012883	06SEP15	DS	FY

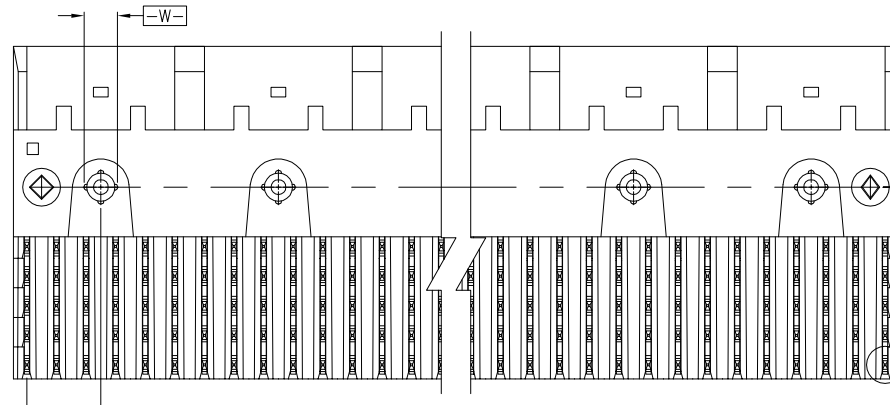


A REF

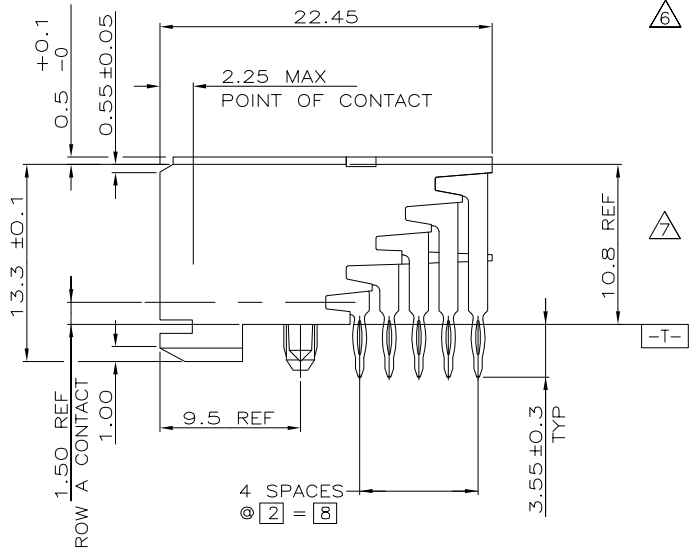
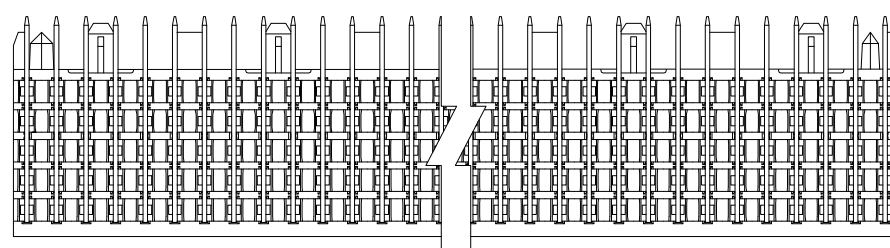


ROW E
ROW D
ROW C
ROW B
ROW A
POSITION A1

SEE TABLE

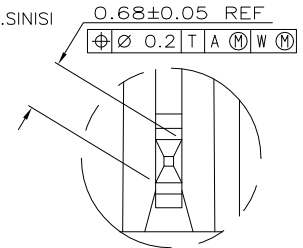


SEE DETAIL Z

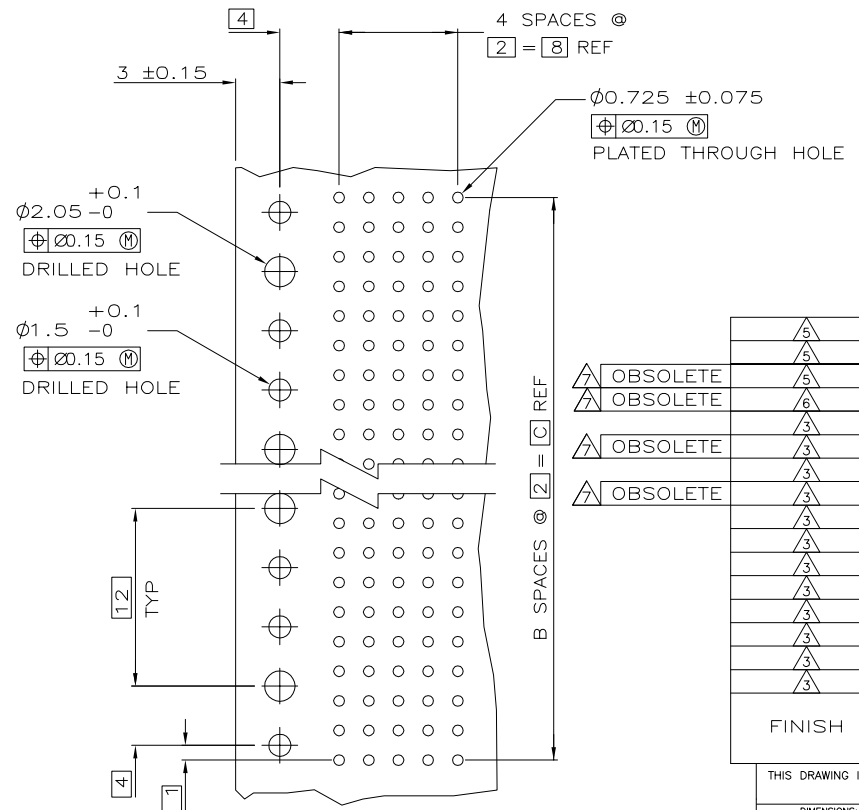


- ① HOUSING MATERIAL: LIQUID CRYSTAL POLYMER
COLOR: NATURAL.
- ② CONTACT MATERIAL: PHOSPHOR-BRONZE.
- ③ CONTACT FINISH:
UNDERPLATE (ENTIRE CONTACT):
0.00127 MIN NICKEL PER SAE-AMS-QQ-N-290
ON MATING SURFACES:
CONFORMS TO ALL TESTING SPECIFIED FOR TELCORDIA UNCONTROLLED ENVIRONMENT.
ON LEADS:
0.0006 MIN MATTE TIN PER ASTM B 545 OVER UNDERPLATE.
LUBRICATION (MIN MATING SURFACES):
SURFACE CONDITIONER AFTER PLATING.
- ④ PART MARKING LOCATED APPROXIMATELY AS SHOWN.
- ⑤ CONTACT FINISH:
UNDERPLATE (ENTIRE CONTACT):
0.00127 MIN NICKEL PER SAE-AMS-QQ-N-290
ON MATING SURFACES:
0.00076 MIN NICKEL OR COBALT HARDENED GOLD PER ASTM B-488 OVER UNDERPLATE.
ON LEADS:
0.0006 MIN MATTE TIN PER ASTM B 545 OVER UNDERPLATE.
LUBRICATION (MIN MATING SURFACES):
SURFACE CONDITIONER AFTER PLATING.
- ⑥ CONTACT FINISH:
UNDERPLATE (ENTIRE CONTACT):
0.00127 MIN NICKEL PER SAE-AMS-QQ-N-290
ON MATING SURFACES:
0.00127 MIN NICKEL OR COBALT HARDENED GOLD PER ASTM B-488 OVER UNDERPLATE.
ON LEADS:
0.0006 MIN MATTE TIN PER ASTM B 545 OVER UNDERPLATE.
LUBRICATION (MIN MATING SURFACES):
SURFACE CONDITIONER AFTER PLATING.

⑦ OBSOLETE PARTS: OBSOLETE CIS STREAMLINING PER D.RENAUD/D.SINISI



DETAIL Z
SCALE 20:1



RECOMMENDED CIRCUIT PATTERN
PER IPC-D300 TYPE II, CLASS C
(COMPONENT SIDE)

FINISH	POSITIONING PEGS	C	B	A	NO OF SIGNAL POSN	PART NUMBER
⑤	NO	22	11	23.88	60	3-5223008-2
⑤	YES	10	5	11.88	30	3-5223008-1
⑤	NO	46	23	47.88	120	3-5223008-4
⑥	NO	46	23	47.88	120	2-5223008-4
③	NO	214	107	215.88	540	1-5223008-2
③	NO	130	65	131.88	330	1-5223008-1
③	NO	118	59	119.88	300	1-5223008-0
③	NO	106	53	107.88	270	5223008-9
③	NO	94	47	95.88	240	5223008-8
③	NO	82	41	83.88	210	5223008-7
③	NO	70	35	71.88	180	5223008-6
③	NO	58	29	59.88	150	5223008-5
③	NO	46	23	47.88	120	5223008-4
③	NO	34	17	35.88	90	5223008-3
③	NO	22	11	23.88	60	5223008-2
③	YES	10	5	11.88	30	5223008-1

THIS DRAWING IS A CONTROLLED DOCUMENT.

DWI: B.MCMASTER 22NOV04
CHK: R.WERTZ 22NOV04
APPD: R.WERTZ 22NOV04

STE TE Connectivity

ASSEMBLY, RECEPTACLE, SIGNAL, RIGHT ANGLE, Z-PACK 2mm FB, 5 ROW, PRESS FIT LEAD

APPROVALS: DIMENSIONS (mm), TOLERANCES UNLESS OTHERWISE SPECIFIED, MATERIAL, FINISH, WEIGHT, CUSTOMER DRAWING

SIZE: A1, CAGE CODE: 00779, DRAWING NO: C=5223008, SCALE: 4:1, SHEET 1 OF 1, REV C